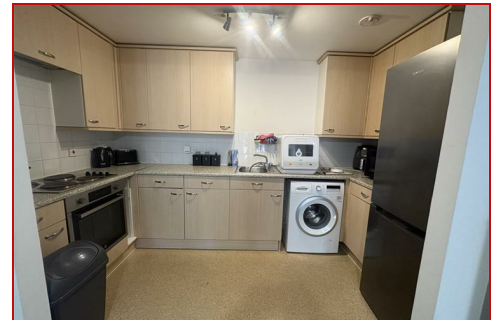
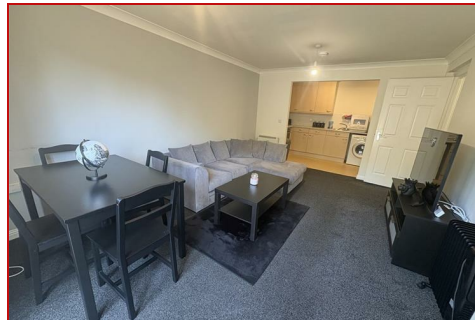




**BENJAMIN
STEVENS.**
estate agents



Wellsfield, Bushey WD23 2NX

£1,500 PCM

Benjamin Stevens are delighted to present this one bedroom apartment situated on a quiet turning on the Watford/Bushey borders.

Located close to Bushey mainline train station this new build apartment with an open plan lounge/diner/fitted kitchen which is perfect for entertaining, bathroom, carpeted throughout.

Further benefits include allocated parking and an Entryphone system

Wellsfield is also close to Watford Town Centre with its vibrant range of shops & restaurants.

To arrange a viewing, please call 020 3271 0111

Wellsfield, Bushey WD23 2NX

Bedroom

Kitchen

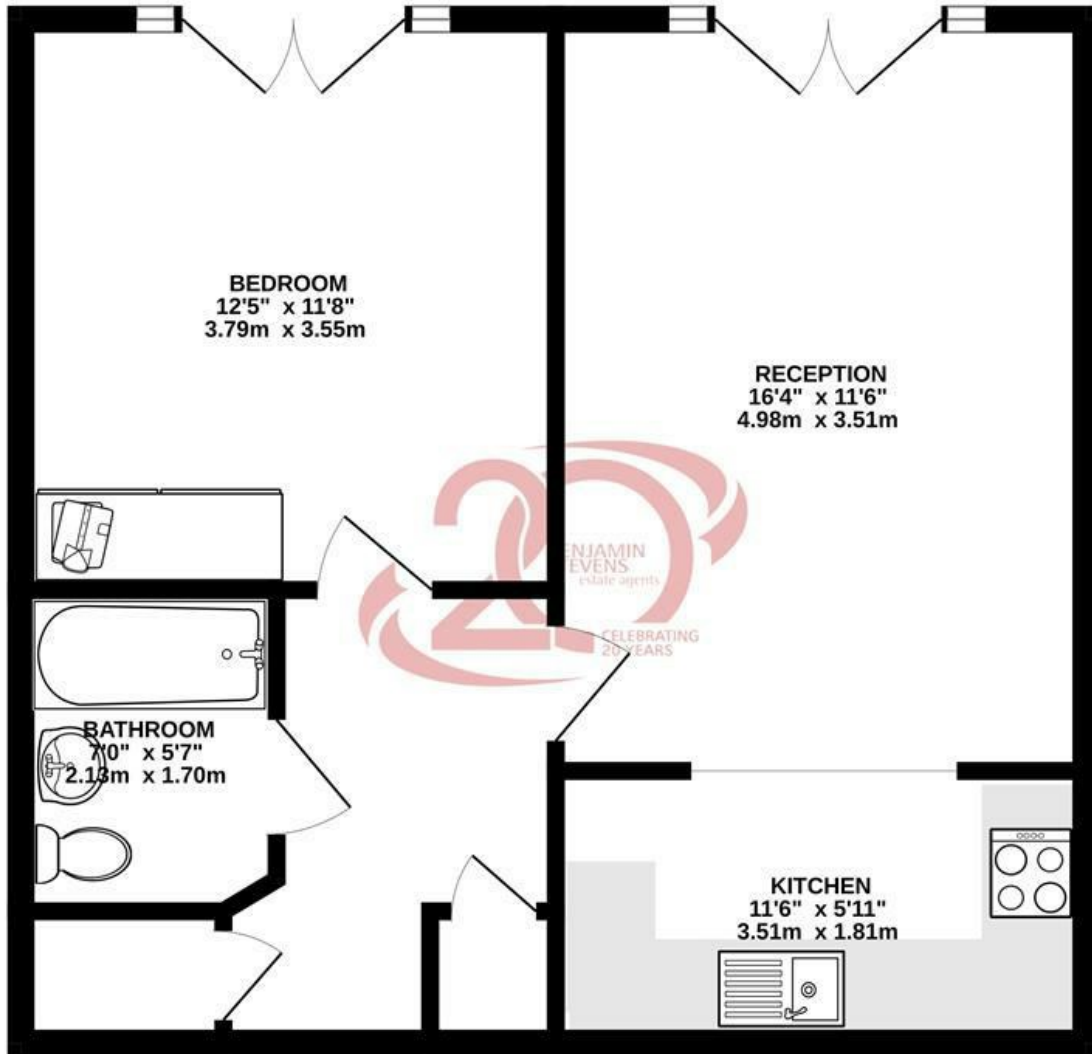
Bathroom

Exterior

Reception

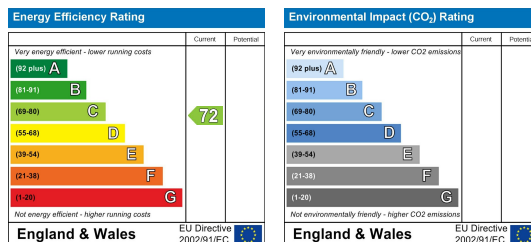


GROUND FLOOR
516 sq.ft. (48.0 sq.m.) approx.



TOTAL FLOOR AREA : 516 sq.ft. (48.0 sq.m.) approx.

Whilst every attempt has been made to ensure the accuracy of the floorplan contained here, measurements of doors, windows, rooms and any other items are approximate and no responsibility is taken for any error, omission or mis-statement. This plan is for illustrative purposes only and should be used as such by any prospective purchaser. The services, systems and appliances shown have not been tested and no guarantee as to their operability or efficiency can be given.
Made with Metropix ©2025



Edgware Office- 194 Station Road, Edgware, HA8 7AT. Tel: 020 8958 1118
Bushey Heath Office- 59 High Road, Bushey, WD23 1EE. Tel: 020 8950 7777
www.benjaminstevens.co.uk